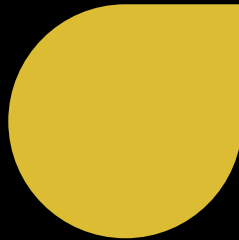




CELEBRATING 50 YEARS

OF BUILDING THRIVING COMMUNITIES





On the Golden Anniversary of Phipps Neighborhoods, we stand together, looking forward to the next 50 years of building thriving communities.

Phipps Neighborhoods was established in 1972 with one employee within a Phipps Houses building with the goal of addressing community needs by helping residents navigate social programs to improve their wellbeing.

The seed planted 50 years ago by and with Phipps Houses residents has bloomed into programs that wrap around the whole family, supporting education, career advancement, and economic opportunities for our neighbors. Phipps' scope of services and breadth of impact continues to grow with the same goal of working with our neighbors to build thriving communities, centering their voices to design our future.

Fifty years of Phipps Neighborhoods has shown us the resiliency and strength of our community. On this occasion, we celebrate the hard work and determination of every single staff member, resident, partner, and participant that has impacted our ability to thrive.

THANK YOU FOR EMBARKING ON THIS JOURNEY TO TRANSFORM THE LIVES OF THOUSANDS OF NEW YORKERS!



ANDRE WHITE
Executive Director & CEO
Phipps Neighborhoods



ADAM WEINSTEIN
President & CEO
Phipps Houses
Chair
Phipps Neighborhoods



WE'RE CELEBRATING 50 YEARS!

It's our Golden Anniversary – a time to reflect on where we came from, celebrate where we are now, **and imagine our next 50 years!**

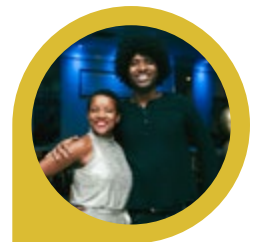
This year, stakeholders from across the organization came together to form a new **mission, vision, and set of values** that build on the foundation of Phipps Neighborhoods and guide our future. Their vision, and the 14,000 community members we serve, drive our path forward.

To mark this momentous occasion, this year's annual report shares more about how Phipps Neighborhoods builds **access** and pathways for **success** for our neighbors.



"There is always hope and transformation in people's lives. That's what Phipps is helping me with. Transforming my life, and making a difference. They are changing people's lives."

> JACQUELINE MILAN COMMUNITY MEMBER



OUR IMPACT



FINANCIAL EMPOWERMENT & COMMUNITY WELLNESS

With the effects of the pandemic still hitting close to home, Phipps Neighborhoods **case managers** and **resident services teams** worked through multiple avenues to support the economic stability and upward mobility of our residents and community. We **ensured residents stayed in their homes**, helping 216 families apply for aid through the NYS Emergency Rental Assistance Program. **Renter Advantage** empowers our neighbors to learn skills that build **pathways to financial stability and upward mobility**. Through the program, Phipps provided 560 residents with the tools to save, budget, clear financial debts, and build their credit.



\$1.2M

in rental assistance for Phipps families

560

RESIDENTS received financial literacy training



INCREASING FOOD ACCESS FOR OUR COMMUNITIES

Our **food pantries** have become a **vital family lifeline** over the past two years. Partnerships with community-based organizations help provide shelf-stable and fresh foods to Phipps residents and community members every month. With the cost of food skyrocketing, we scaled our food pantry services, launching satellite sites at Phipps Houses residences and community centers across the Bronx. Anyone in need can come to one of the centers to access pantry items and attend food distribution events throughout the year, ensuring **all families have access** to healthy, consistent meals.

In 2022, Phipps Neighborhoods distributed
130,625
MEALS
TO BRONX RESIDENTS

"Phipps Neighborhoods strives to support families who may sacrifice basic needs to put food on the table. Providing access to monthly nutritious food packages to individuals and families in the Melrose, Morrisania, West Farms, and Soundview communities makes a difference in the lives of those we serve."

> **ARLENE IGLESIAS** FAMILY DEVELOPMENT COORDINATOR



EXPANDING EDUCATION & WORKFORCE PROGRAMS

THE POWER OF SCHOOL AND COMMUNITY PARTNERSHIPS

Phipps Neighborhoods afterschool, community centers, and community school programs **build a bridge between the home and the school day**. Our elementary, middle, and high schools are hubs for family support, providing vital services to students, their families, and neighborhood residents. These **community schools build safe spaces** for students outside the classroom with programs that promote attendance improvement, academic enhancement, mental health, and social and emotional support. Adult education, evening & weekend programming, and parent & family engagement are also provided to support the community outside school hours.



OVER
4,000
YOUNG PEOPLE were engaged in Phipps early childhood, after school, and community school enrichment programs

EARLY CHILDHOOD EDUCATION IN ACTION

Access to early education is critical for promoting long-term success for children. The Daly and Lebanon Pre-K For All Centers focus on helping 3 and 4-year-olds prepare for elementary school and life beyond the classroom. Our teachers partner with caregivers to provide well-rounded, child-centered, experiential learning opportunities. Caregivers are also connected to the full spectrum of Phipps Neighborhoods' social-economic services to promote whole family success.

90
YOUNG SCHOLARS
received early childhood enrichment and extended day-care supports

"When you provide students with socio-emotional and interpersonal skills as part of their foundation, it goes beyond academic success. You are preparing them to be a well-rounded, successful human being who will know how to navigate life."

> **LISA GREEN** MANAGING DIRECTOR
OF EARLY CHILDHOOD EDUCATION

GETTING READY FOR COLLEGE WITH OUR COMMUNITY

Phipps Neighborhoods **College Access** program provides career and college exploration, college application support, and long-term guidance for up to 6 years of postsecondary matriculation. With college-bound workshops starting in Freshman year, our program **prepares our scholars** for the transition to **postsecondary life**. We guide students to apply to schools that will be a good fit for them as young adults, visit multiple college campuses, and ensure that once they get into a school, they have **everything they need to succeed** in the classroom and beyond.

"The idea of college access is what we need in our communities of color. Give me access and watch me soar!"

> **KELSIE M. JAMES** COLLEGE ACCESS
COORDINATOR

110 STUDENTS
were engaged in
College Access



100%
of participants were
accepted into 2 YEAR
or 4 YEAR college



BUILDING AN ESSENTIAL WORKFORCE THROUGH PHIPPS' PROGRAMS

Phipps Neighborhoods provides job training, job placement support, and career navigation to hundreds of New Yorkers. Our signature **Career Network: Healthcare** program has held yearly cohorts since 2014 and graduated more than 540 participants. **Career Network: Building Services**' inaugural cohort of 16 young people are onto job placements in the field this year. This innovative program provides participants with on-the-job experience and professional certificates to **access career pathways** that provide a thriving wage.

913
PARTICIPANTS
have engaged
in workforce
development
services



732 PHIPPS
PARTICIPANTS
were placed in
job experiences

SPOTLIGHTS



SPOTLIGHT ON PUBLIC HEALTH

Phipps Neighborhoods launched our Public Health Initiative through the COVID-19 Disparities Grant (CDG) in November 2021, a community education program to increase access to COVID-19 prevention, treatment, and vaccination services in partnership with the Fund for Public Health in New York and the NYC Department of Health.

Community Health Workers are on the ground to support neighborhood-level access to care and education, protecting families and slowing the spread of COVID within our catchment areas (Tremont and West Farms).

"They gave book bags, they gave hand sanitizers, they gave masks, and helpful information. People 8 to 80, and all of us appreciate everything that they did for us and that's coming from their heart, and I like that."

> RAY PHIPPS RESIDENT

WE ENGAGED

9,000+

COMMUNITY MEMBERS

in healthcare information sessions, workshops, one-on-one conversations, and community events

WE DISTRIBUTED

13,000+

COVID HOME TESTS

&

79,000+

FACE COVERINGS

WE CONNECTED

11,000+

neighbors to health and wellness support services



SPOTLIGHT ON DIGITAL ACCESS & EQUITY

Since we launched our Digital Access & Equity programs in September 2020, we have been centering skill-building opportunities, live technical support for families, and inspiring youth through STEAM Clubs in our community centers and Schools. In 2023, we have six Community Fellows co-designing the future of our Digital Access services with our community and the NYC Service Design Studio.



98%

OF STEM PARTICIPANTS

increased technology proficiency

PHIPPS ENGAGED

750+

2ND-8TH GRADE STUDENTS

in coding, 3-D design, and robotics through 10-week learning experiences

"Digital access is freedom."

> ALLISON JEFFREY MANAGING DIRECTOR OF DIGITAL ACCESS

VISION

PHIPPS NEIGHBORHOODS ENVISION A NEW YORK CITY WHERE COMMUNITY MEMBERS OF ALL AGES HAVE MEANINGFUL OPPORTUNITIES TO REALIZE THEIR POTENTIAL, BUILD SKILLS, AND STRENGTHEN THEIR NEIGHBORHOODS.

MISSION

WE CREATE SAFE, INCLUSIVE SPACES WHERE COMMUNITY MEMBERS ACCESS EDUCATION, CAREER, AND ECONOMIC OPPORTUNITIES TO SUCCEED AT SCHOOL AND WORK, RAISE HEALTHY FAMILIES AND BUILD THRIVING COMMUNITIES.

2022 DONORS

COMMUNITY BUILDER

Charles River Fund
Lettire Construction Corp.
Monadnock Construction, Inc.
Richman Housing Resources LLC
Robin Hood Foundation
The Roche Family Foundation
Verizon Foundation

CAPSTONE BENEFACTOR

Altman Foundation
Bloomberg L.P.
Charina Foundation, Inc.
Goldman Sachs Gives
Horace W. Goldsmith Foundation
The Lincoln Fund
Robert and Joyce Menschel Family Foundation
Pinkerton Foundation
Santander
TD Bank
The Thompson Family Foundation, Inc.
Wells Fargo Bank

KEYSTONE BENEFACTOR

Ambrose Monell Foundation
Anonymous
Atlantic Development Group LLC
BDO USA, LLP
Bronx Community Foundation
Russell and Judy Carson
Chicago Title Insurance Company
Citi Community Capital
Dattner Architects
Ira W. De Camp Foundation
Douglaston Development
Boris and Natalie Gutin
Hines Interests Limited Partnership
Hirschen Singer & Epstein, LLP
Kramer Levin Naftalis & Frankel LLP
Manhattan Parking Group
Mega Contracting Inc.
Celene A. Menschel
Charis M. Menschel Drant
Sabina Menschel
David and Jennifer Millstone
Jay and Arlene Neveloff
Eric and Erica Schwartz
The Starr Foundation
Barbara Hope Zuckerberg

CORNERSTONE BENEFACTOR

A G Foundation
AKRF, Inc.
Dita Amory
The Arker Companies
Jason D. Boroff
C A Rich Consultants, Inc.
John K. Castle
CBRE
CohnReznick LLP
George Comfort & Sons, Inc.
The Cornerstone Group
The Durst Organization Inc.
Goldman, Sachs & Co.
Kraus Family Foundation
Gerald C. McNamara, Jr. and Renee K. Petrofes
MHG Architects, P.C.
Mountco Construction and Development
The New Yankee Stadium Community Benefits Fund
Parkset Realty, Inc.
Joseph Rosen Foundation
Lyn M. Ross
Robert E. and Judith O. Rubin Foundation
Sagehall LLC
Andrew Sidamon-Eristoff
Roy J. Zuckerberg Family Foundation

FOUNDATION BENEFACTOR

Anbau Enterprises, Inc
Association For a Better New York
Frances & Benjamin Benenson Foundation, Inc.

Clifton Budd & DeMaria, LLP
Crewcial Partners LLC
J. Gordon Douglas
Neil A. Falcone
Frank Fiorito
Susan K. Freedman and Rabbi Richard Jacobs
Anna-Maria and Stephen Kellen Foundation
Scott and Heidi Powell
Sidley Austin LLP
Darcy Stacom and Chris Kraus
Donald and Elizabeth Sutton
Tishman Speyer Properties, Inc.
Robert & Jane Toll Foundation
William and Heather Vratos
Watchguard 24/7

PATRON SUPPORTER

Amalgamated Bank of New York
Bank of America Merrill Lynch
John Beckman
Max and Pamela Berry
Bousquet Holstein PLLC
George T. Boyer
The Briarwood Organization
Bright Power
The Carwill Foundation
David S. Chao
Congregation Emanu-El of the City of New York
Crescent Street Construction Corp
Curtis + Ginsberg Architects LLP
Dagher Engineering
DeSimone Consulting Engineers
Robert C. Dinerstein
EBB Tithes, Inc.
Fuhrman Family Foundation
Timur Galen and Linda Genereux
Gilston Electrical Contracting LLC
Greystone & Co. II LLC
Victoria W. Guest
Ronnie Heyman
JM Zoning
JVP Management
Albert Kalimian
Debra Kalimian
Rachel and Drew Katz Foundation, Inc.
Langan Engineering and Environmental Services
Marvel Architects
Scott D. Metzner and Judy Gallent
Morris and Nancy Offit
Elihu Rose
Rita Sakhaie
Robert and Priscilla Selsam
Settlement Housing Fund, Inc.
Sherman & Gordon, P.C.
Elizabeth W. Smith
James F. Smith
Weitzman Associates
James Wiener

BOARD OF TRUSTEES

ADAM WEINSTEIN

Board Chair President & CEO
Phipps Houses

ANDRE WHITE

Executive Director & CEO
Phipps Neighborhoods

Ronay Menschel
Nellie Afshar
Dita Amory
John Beckman
Larry D. Johnson, Jr.
Marion Jones
Katy Hutto
Omar Kariuki
Albanery Roman
Ruby Saake
James F. Smith
James S. Wiener

2021 FINANCIALS

STATEMENTS OF ACTIVITIES

Years ended June 30, 2021 and 2020
(in thousands)

NET ASSETS WITHOUT DONOR RESTRICTIONS

	2021	2020
REVENUE AND OTHER SUPPORT		
Contributions		
Phipps Houses	\$ 1,110	\$ 1,099
Other	845	537
Program and grant revenue	1,612	2,248
Fundraising event	1,133	1,547
Investment and other income	183	294
Net assets released from restrictions – satisfaction of program restrictions	7,825	11,880

TOTAL REVENUE AND OTHER SUPPORT

12,708 17,605

EXPENSES

Program expenses	12,523	14,147
Management and general	2,611	2,684
Fundraising	408	480

TOTAL EXPENSES

15,542 17,311

(DECREASE) INCREASE IN NET ASSETS WITHOUT DONOR RESTRICTIONS BEFORE POSTRETIREMENT BENEFIT ADJUSTMENT
(2,834) 294

POST RETIREMENT BENEFIT ADJUSTMENT
(249) (657)

DECREASE IN NET ASSETS WITHOUT DONOR RESTRICTIONS
(3,083) (363)

NET ASSETS WITH DONOR RESTRICTIONS

Program and grant revenue
26,154 8,478

Net assets released from restrictions – Satisfaction of program restrictions
(7,825) (11,880)

Investment (loss) income 1,800 (62)

(DECREASE) INCREASE IN NET ASSETS WITH DONOR RESTRICTIONS
20,129 (3,464)

(DECREASE) INCREASE IN NET ASSETS
17,046 (3,827)

NET ASSETS, BEGINNING OF YEAR
19,626 23,453

NET ASSETS, END OF YEAR
\$36,672 \$19,626

* An updated audited financial will be made available in the coming months

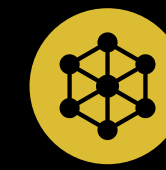
OUR VALUES

As Phipps Neighborhoods builds toward the next 50 years, we are rooted in our history as we look to the future. These values guide every program at Phipps Neighborhoods to support our community members:



INTENTIONAL

We serve with a purpose and aim to support the needs of our community members by being responsive and creating a culture of reflection



PARTNERSHIP

We collaborate and cooperate to achieve the collective goals of our community members by filling the gaps in systems and structures through partnership



INTEGRITY

CLIENT CENTERED

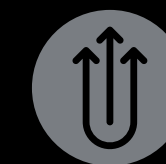
PARTNERSHIP

INCLUSION



INTEGRITY

We are truthful and accountable to all our community members, and we honor our word



CLIENT CENTERED

We are committed to keeping the needs of our community members the focus of our decision-making, empowering them to be doers and creators of their success



INCLUSION

We know our community members are prime sources for the ideals that drive our programs, and we utilize those sources to shepherd aspirations into accomplishments

